

## Quick Installation Guide

WNAP-C3220

802.11n Ceiling Mount Wireless  
Range Extender / Access Point



### 1. Package Contents

Thank you for choosing PLANET WNAP-C3220. Before installing the AP, please verify the contents inside the package box.

Wireless AP



Quick Guide



Ethernet Cable



Power Adapter



Mounting Kit



If there is any item missing or damaged, please contact the seller immediately.

- 1 -

## 2. Physical Introduction

### Front Panel Description



Power LED

### Rear Panel Description

Reset Button

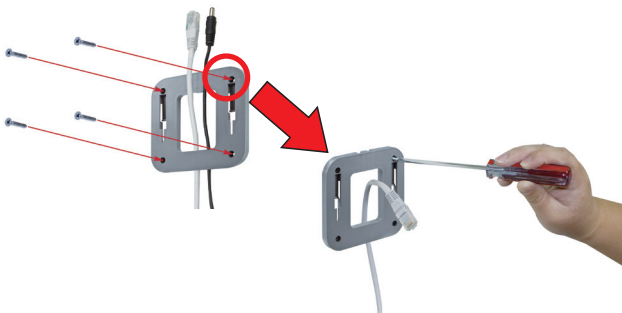
1 x 10/100Mbps PoE LAN Port

Power Connector 12V DC Input

- 2 -

## 3. Hardware Installation

**Step 1:** Attach the bracket to the wall or ceiling, and mark each point in the bracket for the screws. Remove the bracket to drill the points and insert the plastic wall-mounts. Use screws to lock the bracket with a screw driver.



**Step 2:** Plug the RJ45 Ethernet cable into the WNAP-C3220.



- 3 -

**Step 3:** Plug the power adapter into the WNAP-C3220. If the WNAP-C3220 is connected to an 802.3af PoE switch in Step 2, you don't have to plug in the power adapter.



**Step 4:** Attach the WNAP-C3220 to the mounting bracket.



**Step 5:** Installation is successfully completed.



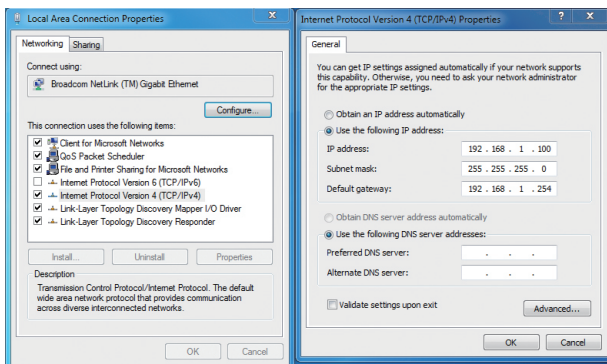
1. ONLY use the power adapter supplied with the WNAP-C3220. Otherwise, the product may be damaged.
2. For the power supply of the WNAP-C3220, you could use either IEEE 802.3af PSE device or 12V DC adapter. Please do not use 12V adapter and PSE device at the same time. It may damage the WNAP-C3220 itself.

- 4 -

## 4. Wired Network Configuration (Windows 7)

A computer with wired Ethernet connection is required for the first-time configuration of the WNAP-C3220.

1. Click **"Start"** button located at the lower-left corner of your computer.
2. Click **"Control Panel"**.
3. Double click **"Network and Sharing Center"** icon.
4. Click **"Change Adapter Settings"**.
5. Double click **"Local Area Connection"**.
6. Select **"Internet Protocol Version 4(TCP/IPv4)"** and click **"Properties"**.
7. Select **"Use the following IP address"**, and then click **"OK"** button twice to save the configuration. For example, as the default IP address of the WNAP-C3220 is 192.168.1.253 and the router is 192.168.1.254, you may choose from 192.168.1.1 to 192.168.1.252.



- 5 -

## 5. Enter into the Web Management

Default IP Address: **192.168.1.253**  
Default Username: **admin**  
Default Password: **admin**  
Default SSID: **WNAP-C3220**  
Default Wireless Encryption Type: **None**

**Step 1:** The Web management allows you to access and manage the WNAP-C3220 easily. Launch the Web browser and enter the default IP address **<http://192.168.1.253>**



**Step 2:** When the login window pops up, please enter the User Name and Password. The default User Name and Password are both **"admin"**. Then click OK button to continue.

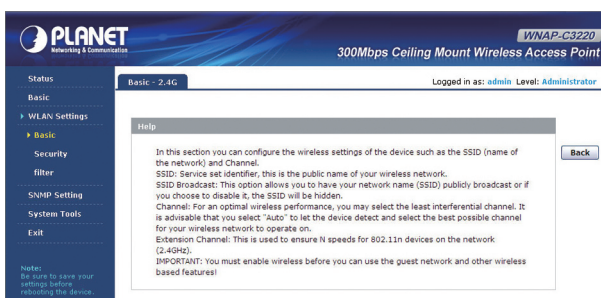


For security reasons it is recommended to change the password at the first login and memorize it.

- 6 -

**Step 3:** After you enter into the Web User Interface, go to **WLAN Settings** to configure your wireless network.

For security reasons, we strongly recommend to configure the Encryption Method and Passphrase of your wireless network.



**Step 4:** Once the basic configuration of the WNAP-C3220 is done, click **"Save"** button to make the change take effect.

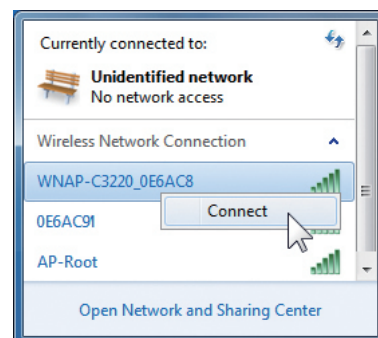
## 6. Wireless Network Connection

**Step 1:** Right-click on the **network icon** displayed in the system tray.



- 7 -

**Step 2:** Highlight the wireless network (SSID) to connect and click **[Connect]** button.



**Step 3:** Enter the **encryption key** of the WNAP-C3220 if necessary.

You have already finished the configuration of the WNAP-C3220. Now you can use your iPhone, iPad, laptop, and any other Wi-Fi device to connect with it wirelessly and start surfing the internet.

### Further Information :

The above steps introduce simple installations and configurations for the WNAP-C3220. For further configurations of LAN, Wireless, Access Control, etc, please refer to the user manual which you can download from the website.

<http://www.planet.com.tw/en/support/download.php?type1=4&model=35377&type=3>

If you have further questions, please contact the local dealer or distributor where you purchased this product.



2011-E10400-003

- 8 -