

Quick Installation Guide

WNAP-6305

802.11n Wireless Outdoor AP



1. Package Contents

Thank you for choosing PLANET WNAP-6305. Before installing the AP, please verify the contents inside the package box.

WNAP-6305



Quick Guide



CD-ROM



Power Adapter



PoE Injector



Mounting Tie x 2
Protective Plug x 2



If there is any item missing or damaged, please contact the seller immediately.

- 1 -

2. Installation Precautions

1. Users **MUST** use a proper and well-installed surge arrester and grounding kit with WNAP-6305; otherwise, a random lightning could easily cause fatal damage to WNAP-6305. **EMD (Lightning) DAMAGE IS NOT COVERED UNDER WARRANTY.**
2. Users **MUST** use the "Power cord & PoE Injector" shipped in the box with the WNAP-6305. Use of other options will cause damage to the WNAP-6305.



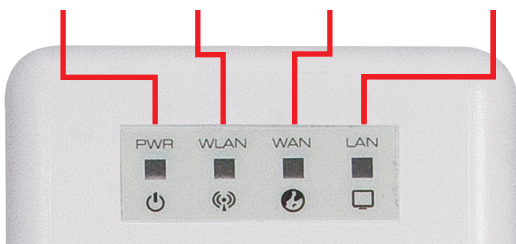
3. Users **MUST** power off the WNAP-6305 first before connecting the external antenna to it; otherwise, damage might be caused to the WNAP-6305 itself.

- 2 -

3. Physical Introduction

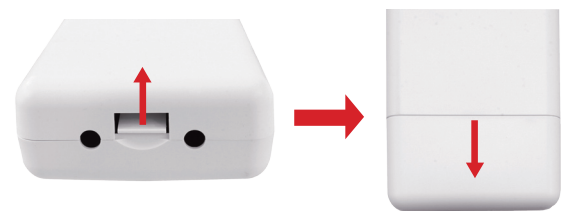
Rear Panel Description – LED Indication

Power LED Wireless LED WAN Port LED LAN Port LED



4. Hardware Installation

STEP 1: Push the latch at the bottom of WNAP-6305 to remove the sliding cover.



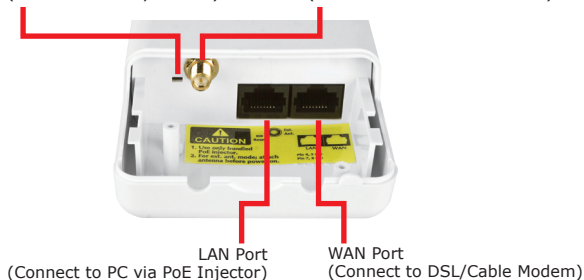
STEP 2: Plug the RJ-45 Ethernet cable into the LAN Port of WNAP-6305.



Bottom Panel Description – Port & Connector

Reset Button
(Return to factory default)

RP-SMA Connector
(Connect to External Antenna)



- 3 -

- 4 -

STEP 3: Slide the cover back and insert the protective plug to seal the bottom of the WNAP-6305.

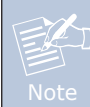


STEP 4: Take out the power cord and PoE injector, plug the power cord into the DC port and plug the other side of the RJ-45 cable in the STEP 2 into the POE port of the PoE injector.



- 5 -

STEP 5: Successful installation.



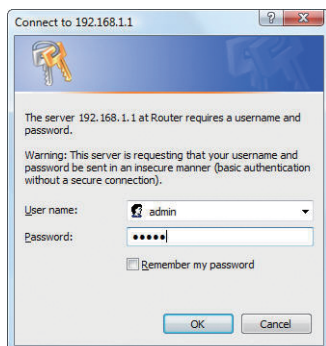
Users **MUST** use the "Power cord & PoE Injector" shipped in the box with the WNAP-6305. Otherwise, the product may be damaged.

5. Web Login

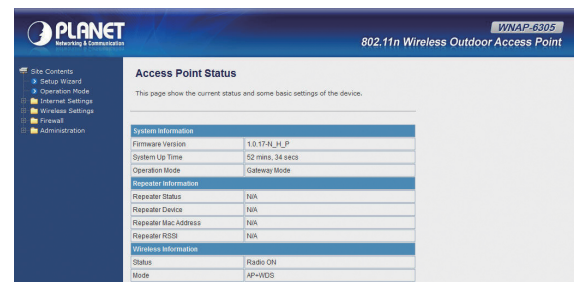
Connect the WNAP-6305 with your PC by an Ethernet cable plugging in LAN port of PoE injector in one side and in LAN port of PC in the other side. Power on the WNAP-6305 by PoE from PoE injector.

- 6 -

1. Assign a static IP address to your PC which should be in the same network segment with the WNAP-6305. As the default IP address of the WNAP-6305 is 192.168.1.1, you may choose from 192.168.1.2 to 192.168.1.254. Then click **OK**.
2. Open the web browser on your PC, key in the IP address (**192.168.1.1**) of the WNAP-6305 in the address bar, and then enter.
3. The default User name and Password are both "**admin**". Enter them and then click **OK**.



4. When you enter into the Web User Interface, click **Setup Wizard** at the left hand side of the screen. Once the basic configuration of the AP is done. Click **Apply** button to make the change take effect.



FURTHER INFORMATION

The above steps introduce simple installations and configurations for WNAP-6305. For further configurations of different operation modes, please refer to the user's manual in the CD. If you have further questions, please contact the local dealer or distributor where you purchased this product.

Default IP Address: **192.168.1.1**
 Default Username: **admin**
 Default Password: **admin**
 Default SSID: **default**

2011-E10420-003

- 7 -

- 8 -