

## Quick Installation Guide

WNAP-7350

300Mbps 802.11a/n  
Wireless Outdoor AP



### 1. Package Contents

Thank you for choosing PLANET WNAP-7350. Before installing the AP, please verify the contents inside the package box.

WNAP-7350

Quick Guide

PoE Injector & Power Cord



Mounting Kit x 1

CD-ROM

RJ-45 Waterproof Kit x 2



If there is any item missed or damaged, please contact the seller immediately.

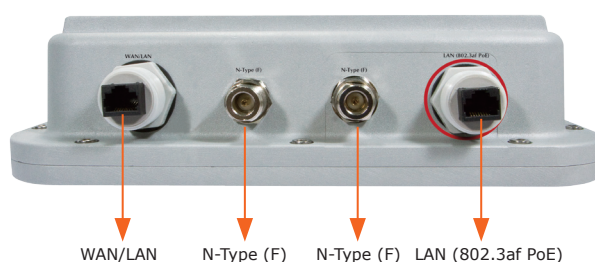
- 1 -

## 2. Installation Precautions

1. Users **MUST** use a proper and well-installed surge arrester and grounding kit with WNAP-7350; otherwise, a random lightning could easily cause fatal damage to WNAP-7350. **EMD (Lightning) DAMAGE IS NOT COVERED UNDER WARRANTY.**
2. Users **MUST** use the "Power cord & PoE Injector" shipped in the box with the WNAP-7350. Use of other options will cause damage to the WNAP-7350.
3. Users **MUST** power off the WNAP-7350 first before connecting the external antennas to it; otherwise, damage might be caused to the WNAP-7350 itself.

## 3. Physical Introduction

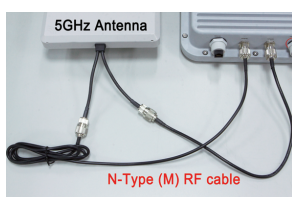
### Rear Panel Description – Port & Connector



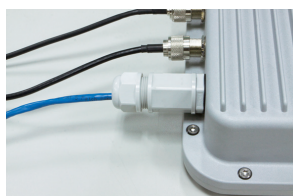
- 2 -

## 4. Hardware Installation

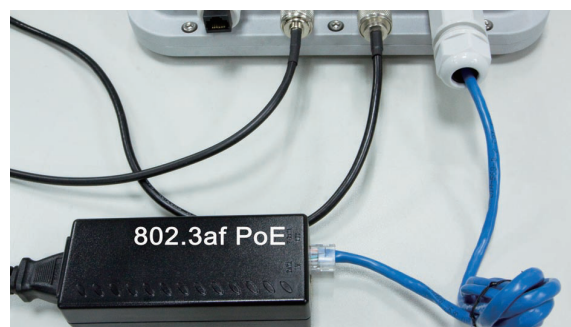
**STEP 1:** Plug the N-Type (M) to N-Type (M) RF cables into the antenna connectors of the WNAP-7350, and then connect the N-Type (F) antennas to the other side of the RF cables.



**STEP 2:** Plug the RJ-45 Ethernet cable into the LAN Port of WNAP-7350 through the waterproof kit.



**STEP 3:** Take out the power cord and PoE injector, plug the power cord into the DC port and plug the other side of the RJ-45 cable into the POE port of the PoE injector.



**STEP 4:** Plug the other waterproof kit to the WAN/LAN port to complete the installation.

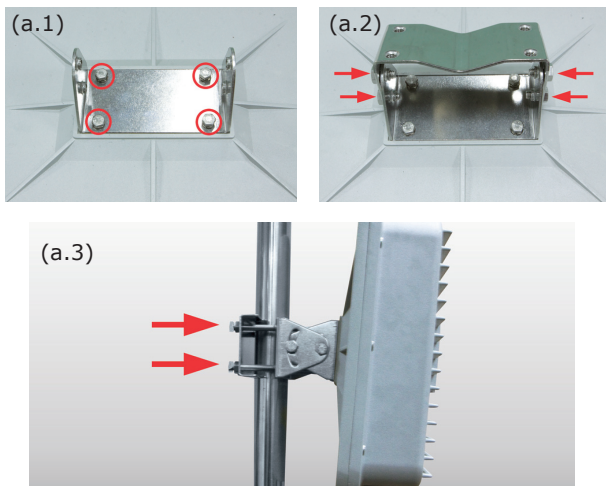


- 3 -

- 4 -

#### STEP 5a: Pole Mounting

- (a.1) Attach the mounting bracket to the back of the device by using four screws and flat washers.
- (a.2) Assemble the M bracket to the outside of the mounting bracket by using four screws and flat washers.
- (a.3) Install the mounting bracket assembly to the pole by using the toothed bracket, and then tighten it by four long screws.



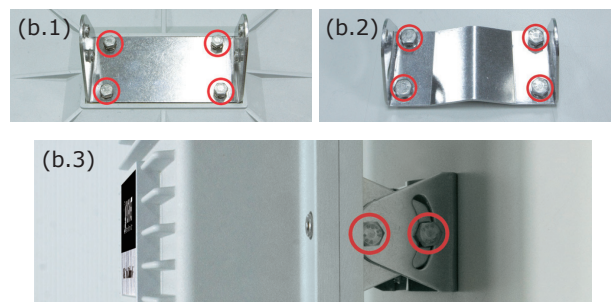
Note

Pole diameter less than 5cm may require the use of hex nuts to lock the long screws to the suitable location.

- 5 -

#### STEP 5b: Wall Mounting

- (b.1) Attach the mounting bracket to the back of the device by using four screws and flat washers.
- (b.2) Assemble the M bracket to the wall by using four screws and flat washers.
- (b.3) Install the mounting bracket assembly inside the M bracket mounted in the wall by using four screws and flat washers.



Caution

#### IMPORTANT SAFETY PRECAUTIONS:

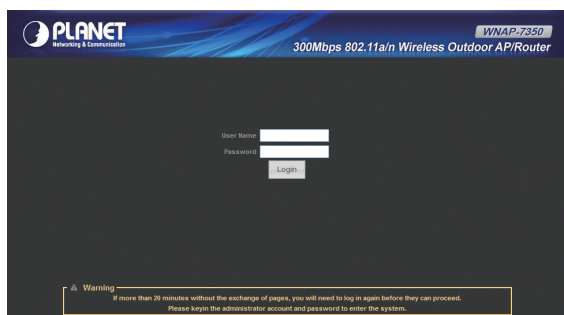
- 1) **LIVES MAY BE AT RISK!** Please be aware for the electric wires around, and tighten the pole. Carefully read the section "**OUTDOOR INSTALLATION WARNING**" in the manual before installation.
- 2) Users **MUST** use the "**Power cord & PoE Injector**" shipped in the box with the WNAP-7350. Otherwise, the product might be damaged.

- 6 -

## 5. Web Login

Connect the WNAP-7350 with your PC by an Ethernet cable plugging in LAN port of PoE injector in one side and in LAN port of PC in the other side. Power on the WNAP-7350 by PoE from PoE injector.

1. Assign a static IP address to your PC which should be in the same network segment with the WNAP-7350. As the default IP address of the WNAP-7350 is 192.168.1.1, you may choose from 192.168.1.2 to 192.168.1.254. Then click **OK**.
2. Open the web browser on your PC, key in the IP address (**192.168.1.1**) of the WNAP-7350 in the address bar, and then enter.
3. The default User name and Password are both "**admin**". Enter them and then click **OK**.



- 7 -

Default IP Address: **192.168.1.1**

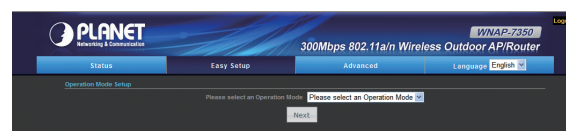
Default User name: **admin**

Default Password: **admin**

Default SSID: **WNAP-7350**

4. Now, you can see the Web management UI of the WNAP-7350.

You can use **Easy Setup** at the top of the screen to configure the WNAP-7350.



#### FURTHER INFORMATION:

The above steps introduce simple installations and configurations for WNAP-7350. For further configurations of different operation modes, please refer to the user's manual in the CD. If you have further questions, please contact the local dealer or distributor where you purchased this product.

2011-E10510-001

- 8 -