

## 300Mbps 802.11n Wireless In-wall PoE Access Point



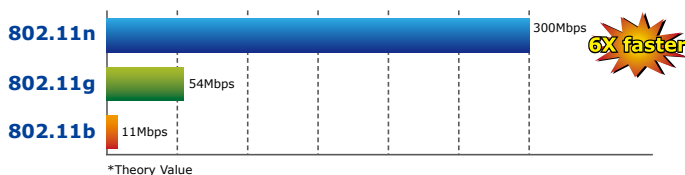
### Wall Outlet to Wireless Solution

The WNAP-W2200 is a stylish in-wall Wi-Fi access point, which is specially designed for existing building structure, without affecting the appearance of the interior design. The design can provide users with convenient wireless local area network (WLAN). The WNAP-W2200 is designed with standard 86 x 86 mm European Outlet Box size and can be installed in the existing building structure to easily construct a wireless network. Thus, it helps system integrator save time, cost and human resource.



### Ultra High Speed 802.11n Wireless Type

The WNAP-W2200 features IEEE 802.11n radio with 2T2R MIMO antenna technology to provide improved wireless speed and coverage with up to 300Mbps upload and download data rate. The incredible wireless speed makes it ideal for stably and smoothly handling multiple HD movies stream, high resolution on-line game, stereo music, VoIP and data streams at the same time. It is also backward compliant with 802.11g and 802.11b standards; thus, it does not need to change the existing network for convenient maintenance. Just connect to the WNAP-W2200 and you can immediately enjoy the high-speed wireless sharing.



### Standard Compliant Hardware Interface

- Complies with IEEE 802.11n wireless LAN speed up to 300Mbps
- 2 x 10/100Base-TX Port with 1-port PoE PD (powered device)
- 2T2R MIMO technology for enhanced throughput and coverage
- USB 2.0 charger port for easy charging to most of mobile devices
- European 86 type wall outlet compatibility

### Secure Network Connection

- Advanced security: 64/128-bit WEP, WPA / WPA2, WPA-PSK / WPA2-PSK (TKIP/AES encryption) and radius authentication
- Supports MAC address filtering

### Easy Installation & Management

- Easy deployment with standard IEEE 802.3af PoE support
- User-friendly web-based UI
- Centralized Management Utility allows administrator to monitor and configure

#### Full Support of Wireless Security Encryption

In aspect of security, besides 64/128-bit WEP encryption, the WNAP-W2200 integrates with WPA / WPA2, WPA-PSK / WPA2-PSK and 802.1x radius authority to secure and protect your wireless LAN. It provides the wireless MAC filtering and SSID broadcast control to consolidate the wireless network security and prevent unauthorized wireless connection.

#### Attractive In-wall Design

Featuring attractive in-wall design, the WNAP-W2200 can be firmly installed into the wall via the standard 86 x 86 mm European outlet box, which is easy and convenient for room installation. Its simple body without protruding antennas also gives no effects to the surroundings.



#### Convenient USB Charger

To provide better services for travelers, the WNAP-W2200 comes with a built-in USB 2.0 charger whose output of 5V DC power can charge any USB compliant mobile devices, e.g. cell phones, ipads, and other handheld devices. Thus, this option gives convenience to pedestrians and travelers. They need not worry about forgetting to carry an AC adapter.

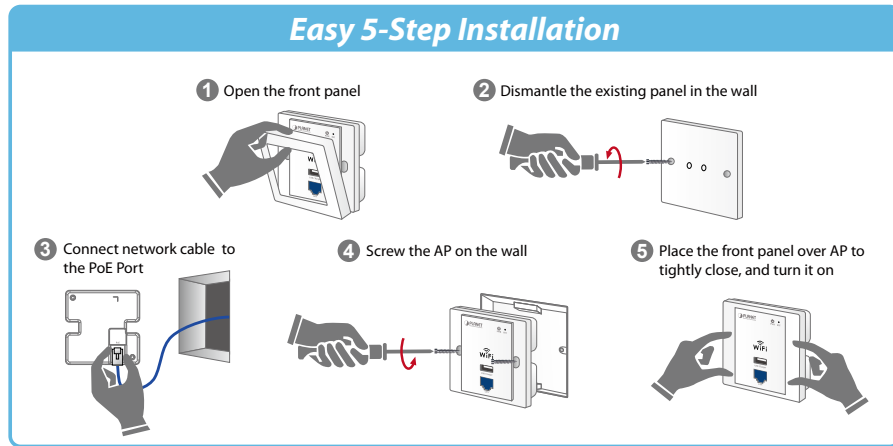


#### Flexible Deployment with PoE Feature

Compliant with IEEE 802.3af Power over Ethernet standard, the WNAP-W2200 can be powered and networked by a single UTP cable. It thus reduces the needs of extra cables and dedicated electrical outlets on the wall, ceiling or any other place which is difficult to reach. The wireless AP deployment becomes more flexible and worry-free from the power outlet locations.

*Easy Installation & Management*

With user-friendly Web UI and Central Management Utility, it is easy for users to install the WNAP-W2200, even for a user who never experiences setting up a wireless network. In addition, its SNMP feature allows the system administrator to remotely monitor and control the network devices more efficiently.



## Applications

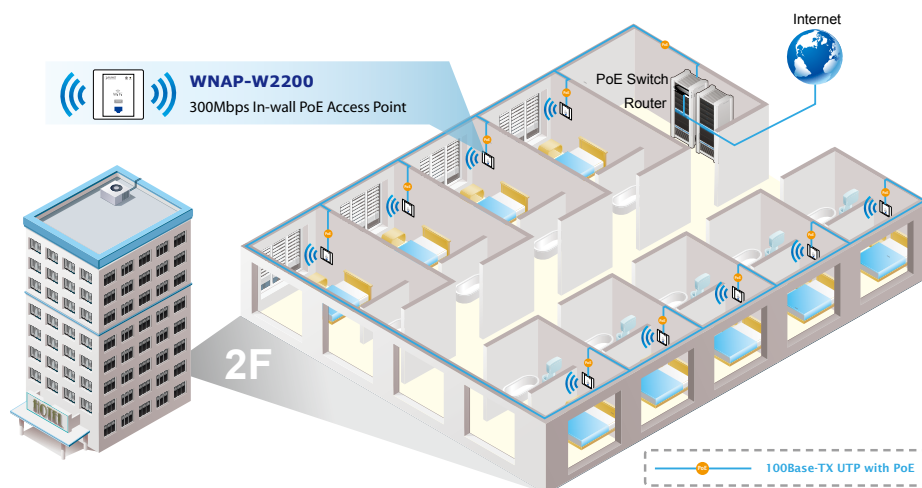
*Wall Outlet Design Makes Wiring Invisible*

The WNAP-W2200 is specifically designed for hotel's Wi-Fi access point, offering guests convenient Wireless LAN service. With the standard 86 type electrical outlet box installed, you don't need to spend extra time and cost to deploy the wireless network. Its small and stylish appearance adapted to the room can match any decor without affecting the original interior design. The WNAP-W2200 supports standard 802.3af PoE power scheme, effectively reducing the cabling cost. Furthermore, it also integrates with a USB 2.0 port that can help a guest replace a heavy charger with just a single USB cable for the charging needs of the handheld device. The WNAP-W2200, with the Planet Smart Discovery Utility and valuable unified management software, brings the most convenience to system administrators or machine operators. No expensive instruments or complex back-end subscriber managed systems are required for deployment.



**Wireless Consumer Applications**

## Wi-Fi Hotel Networking



## Specifications

Product	<b>300Mbps 802.11n Wireless In-wall Access Point</b>	
Product	WNAP-W2200	
<b>Hardware Specifications</b>		
Interface	PoE Port	1 x 10/100Mbps auto MDI/MDI-X RJ45 port (rear panel), IEEE 802.3af PoE PD port
	LAN Port	1 x 10/100Mbps auto MDI/MDI-X RJ45 port (front panel)
	USB Port	USB 2.0, Type-A, 5V DC/0.5A output
PoE Standard	IEEE 802.3af	
Antenna	Built-in 3dBi antenna x 2	
Reset Button	Reset button on front panel	
LED Indicators	PWR/SYS LED	
Material	Plastic	
Dimensions (W x D x H)	86 x 86 x 36 mm	
Weight	113g	
Power Requirements	48V DC, 320mA	
Power Consumption	< 10W	
<b>Wireless interface Specification</b>		
Standard	Compliant with IEEE 802.11b/g/n	
Frequency Band	Europe / ETSI: 2.412~2.472GHz (13 Channels)	
Channel Width	20 or 20/40MHz	
Transmission Distance	Indoor up to 100m	
	Outdoor up to 300m (It is limited to the environment.)	
RF Power (Intentional Radiator)	IEEE 802.11b: 18dBm	
	IEEE 802.11g: 15dBm	
	IEEE 802.11n: 15dBm	

## Ordering Information

WNAP-W2200	300Mbps 802.11n Wireless In-wall PoE Access Point
------------	---

## Related Products

WNL-U556M	300Mbps 802.11n Wireless Micro USB Adapter
WDL-U700	300Mbps Dual Band 802.11n Wireless USB Adapter
WNL-U554A	802.11n Wireless USB 2.0 Adapter External 3dBi Antenna
WNL-U554M	802.11n Micro Wireless USB 2.0 Adapter
WNL-9501	802.11n Wireless PCI Express Adapter

\* To have the best performance and wireless connection, we sincerely advise you to match the above-related products.

## Related PoE Products

ISW-1022MPT	8-Port 10/100Mbps + 2-Port Gigabit TP/SFP Combo PoE Managed Industrial Switch with Wide Operating Temperature
ISW-514PTF	4-Port 10/100Mbps with PoE + 1-Port 100FX Industrial Ethernet Switch – Wide Temperature
ISW-804PT-M12	Industrial IP67 Rated 8-Port 10/100Mbps M12 Fast Ethernet PoE Switch with Wide Operating Temperature
IVC-2004PT	4-Port 10/100Base-TX with PoE + 1-Port BNC / RJ-11 Industrial Ethernet Extender
FTP-802	100Base-FX to 10/100Base-TX PoE Media Converter
SGSW-24040P	24-Port Gigabit PoE Managed Stackable Switch / 220W
POE-E101	IEEE 802.3af Power over Ethernet Extender