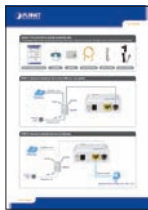


#### VERIFY THE CONTENTS INSIDE PACKAGE BOX

The package should contain the following items plus ADE-3400. If any item is missing or damaged, please contact the seller immediately



Quick Installation Guide



CD-ROM



Splitter



Ethernet Cable

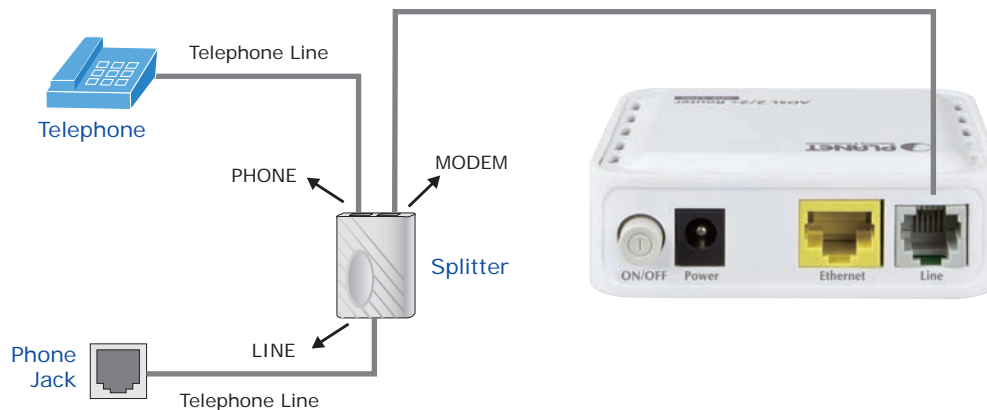


Phone Cable

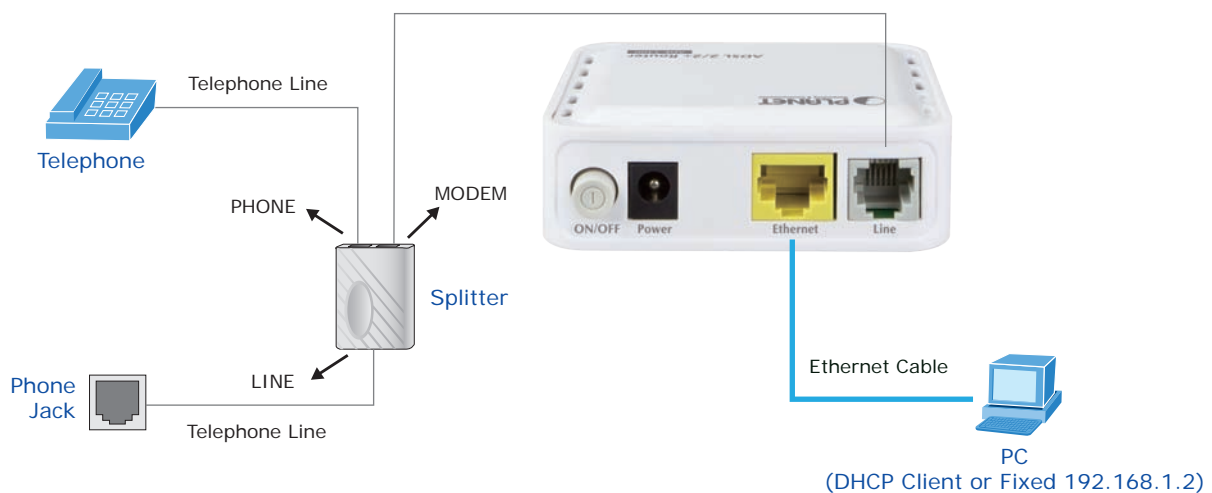



Power Adapter

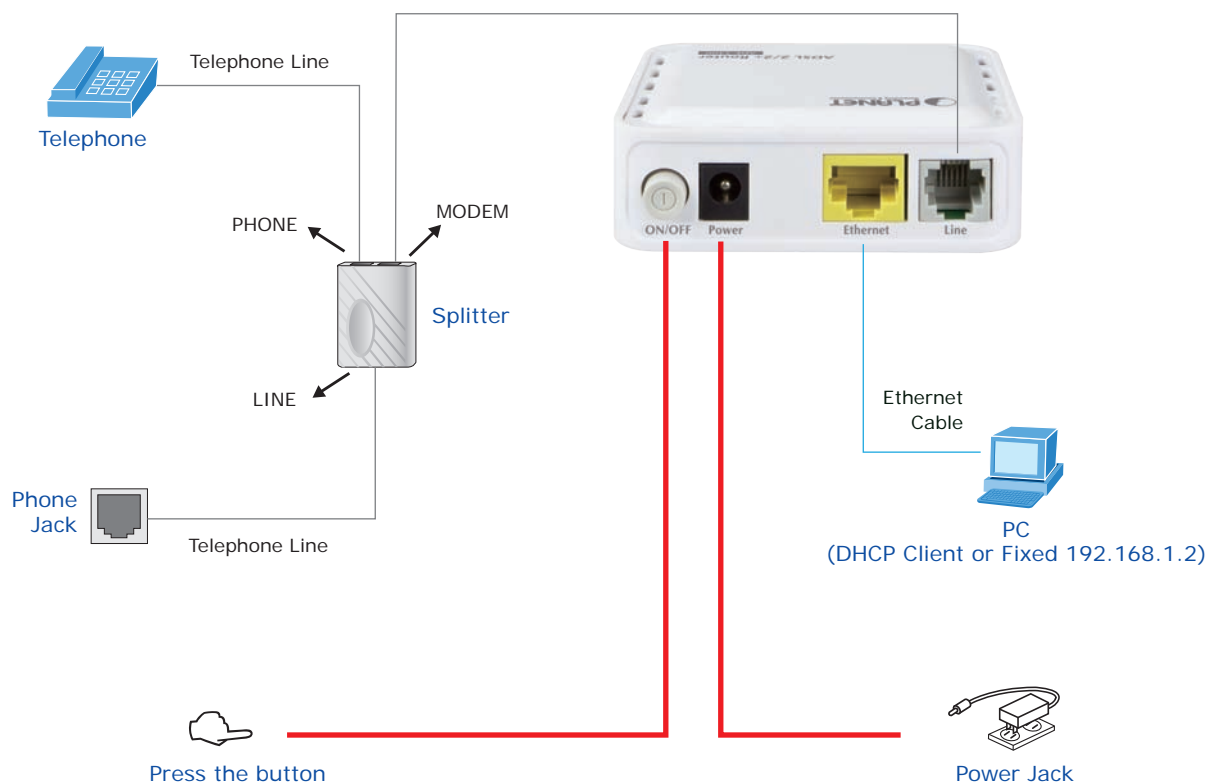
#### STEP 1 : Connect telephone line to the LINE port via splitter



#### STEP 2 : Connect network devices to LAN port



STEP 3 : Connect the Power and then press the button .  
Check whether the LEDs on the front panel are on accordingly.



STEP 4 : Open web browser and type the default IP address (<http://192.168.1.1>)

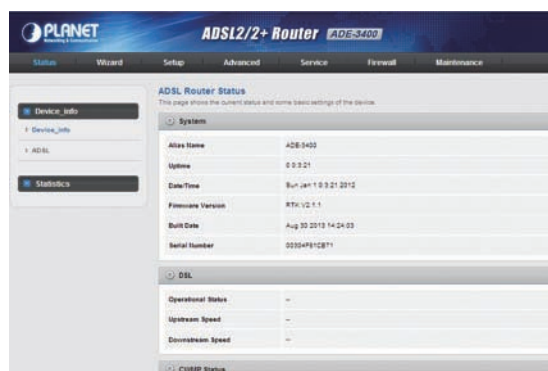
User Name: admin  
Password: admin

**ADSL Router Login**

User Name:

Password:

Login Reset



Note: Please refer to the User's manual in CD-ROM for more information.