

**Internet Telephony PBX System
(30/100/500 SIP Users Registrations)**

IPX-330 / IPX-2100 / IPX-2500

Quick Installation Guide

Table of Contents

1.	IPX-330	3
1.1.	Package Contents	3
1.2.	Hardware Installation	3
1.2.1	Safety Instructions	3
1.2.2	Physical Introduction	4
1.2.3	LED & Button definitions	4
1.2.4	Placement.....	5
1.2.5	Physical Connection	5
1.3.	Basic System Configuration	6
1.3.1	Web Login	6
1.3.2	Configuring the Network Setting	7
1.3.3	Changing IP Address or forgotten admin password.....	8
2.	IPX-2100	9
2.1.	Package Contents	9
2.2.	Hardware Installation	9
2.2.1	Safety Instructions	9
2.2.2	Physical Introduction	10
2.2.3	LED & Button definitions	10
2.2.4	Placement.....	11
2.2.5	Physical Connection	11
2.3.	Basic System Configuration	12
2.3.1	Web Login	12
2.3.2	Configuring the Network Setting	13
2.3.3	Changing IP Address or forgotten admin password.....	14
3.	IPX-2500	15
3.1.	Package Contents	15
3.2.	Hardware Installation	15
3.2.1	Safety Instructions	15
3.2.2	Physical Introduction	16
3.2.3	LED & Button definitions	16
3.2.4	Placement.....	17
3.2.5	Physical Connection	17
3.3	Basic System Configuration	17
3.3.1	Web Login	17
3.3.2	Configuring the Network Setting	18
4.	Further Configuration	20

1. IPX-330

1.1. Package Contents

Thank you for purchasing PLANET Internet Telephony PBX system, IPX-330. This Quick Installation Guide will introduce how to finish the basic setting of connecting the web management interface and the Internet. Open the box of the Internet Telephony PBX system and carefully unpack it. The box should contain the following items:

- IPX-330 x 1
- Quick Installation Guide x 1
- User's Manual CD x 1
- Power Adapter x 1 (12V DC)
- RJ-45 x 1

If any of the above items are damaged or missing, please contact your dealer immediately.

1.2. Hardware Installation

The following are instructions for setting up PLANET IPX-330. Refer to the illustration and follow the simple steps below to quickly install your Internet Telephony PBX system.

1.2.1 Safety Instructions

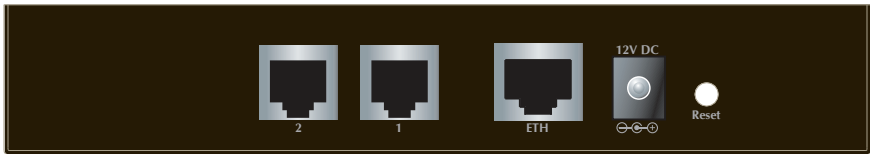
The following are the safety instructions for Internet Telephony PBX system before installing.

- The maximum operating temperature of the IPX-330 is -10~45°C, which allows sufficient air circulation.
- The connections and equipment that supply power to the IPX-330 should be capable of operating safely with the maximum power requirements of the IPX-330. In the event of a power overload, the supply circuits and supply wiring should become hazardous.
- The power adapter must plug into the right supply voltage. Make sure that the supplied power voltage is correct and stable. If the input power voltage is over 10% lower than the standard, it may cause the IPX-330 to malfunction.
- Generally, when installed after the final configuration, the product must comply with the applicable safety standards and regulatory requirements of the country in which it is installed. If necessary, consult for technical support.

1.2.2 Physical Introduction



Front Panel of the IPX-330



Rear Panel of the IPX-330

1.2.3 LED & Button definitions

LED definitions

Front Panel LED	Status	Description
PWR	Steady Green Off	PBX Power ON PBX Power OFF
SYS	Blinking Green Off	System is working System is off
ETH	Blinking Green Off	PBX network connection is established Waiting for network connection
FXO	Steady Red Flashing Off	Ready / Standby Ringing System is off

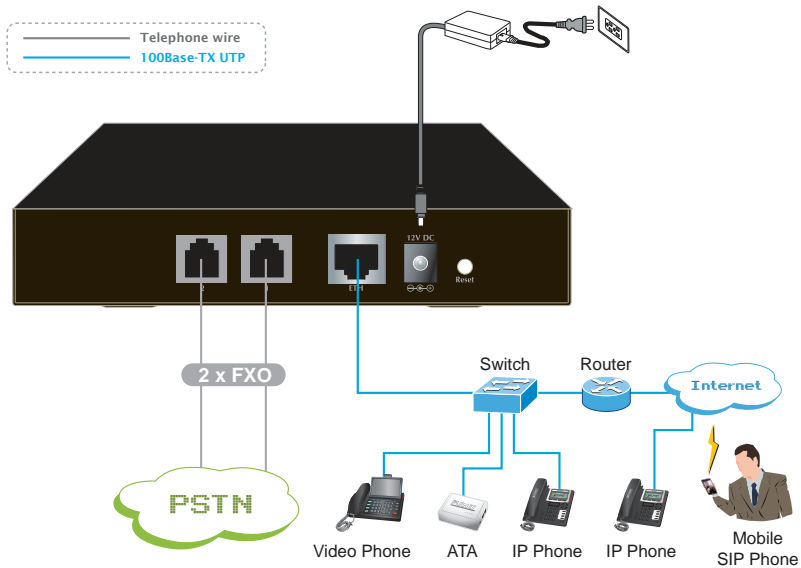
Button	Action	Description
Reset	Press less than 5 secs.	System reboot
	Press over 6 secs.	Reset to Factory Default

1.2.4 Placement

Make sure the device is placed in a safe environment to avoid equipment failure.

- DO NOT place anything on top of the device. Excessive weight could damage it.
- DO NOT obstruct ventilation slots on each side of the IPX-330 or expose it to direct sunlight or other heat source. Be sure that there is adequate air flow around the IPX-330.
- Place the IPX-330 on a flat surface to avoid any damage.

1.2.5 Physical Connection



Physical Connection Topology of the IPX-330

1.3. Basic System Configuration

1.3.1 Web Login

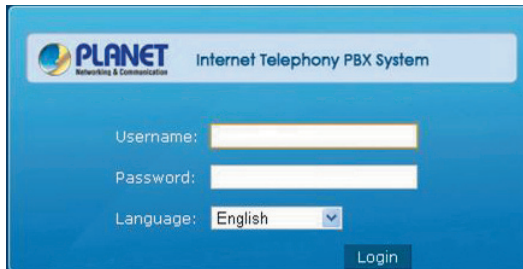
- Step 1.** Connect a computer to an ETH port on the IPX-330. Your PC must set up to the same domain as 192.168.0.X of the IPX-330.
- Step 2.** Start a web browser. To use the user interface, you need a PC with Internet Explorer (version 6 and higher), Firefox, or Safari (for Mac).
- Step 3.** Enter the default IP address of the IPX-330: 192.168.0.1 into the URL address box.
- Step 4.** Enter the default user name **admin** and the default password **admin**, and then click Login to enter Web-based user interface.

(Default IP)

Default ETH IP: **192.168.0.1**

Default User Name: **admin**

Default Password: **admin**



Login page of the IPX-330



Note

For security reason, please change and memorize the new password after this first setup.

1.3.2 Configuring the Network Setting

Step 1. Go to Network Settings → Network



Network & Country button

Network

IPv4 Settings IPv6 Settings VLAN Settings

Ethernet Port Setup

IP Assign:	Static
Hostname:	IPPBX
IP Address:	192.168.1.198
Subnet Mask:	255.255.255.0
Gateway:	192.168.1.254
Primary DNS:	192.168.1.254
Alternate DNS:	

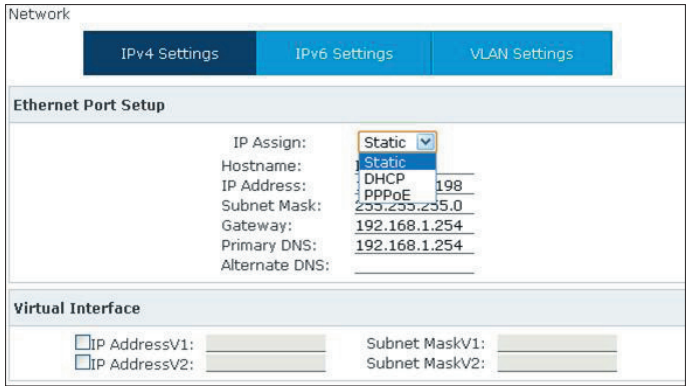
Virtual Interface

<input type="checkbox"/> IP AddressV1:		Subnet MaskV1:	
<input type="checkbox"/> IP AddressV2:		Subnet MaskV2:	

Network Setting page

Step 2. Edit your ETH port IP information .

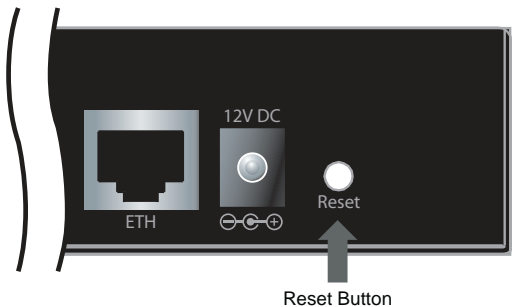
There are three types of Ethernet port connection. They are **Static IP**, **PPPoE** (Point-to-Point Protocol over Ethernet) and **DHCP**. You can find detailed setting process in the user manual.



Selection of IP Connection Type

1.3.3 Changing IP Address or forgotten admin password

To reset the IP address to the default IP Address "192.168.0.1" (ETH) or reset the login password to default value, press the reset button on the front panel for **more than 6 seconds**. After the device is rebooted, you can login the management WEB interface within the same subnet of 192.168.0.xx.



Note

After pressing the "Reset" button, all the system data will be reset to default; if possible, back up the config file before resetting.

2. IPX-2100

2.1. Package Contents

Thank you for purchasing PLANET Internet Telephony PBX system, IPX-2100. This Quick Installation Guide will introduce how to finish the basic setting of connecting the web management interface and the Internet. Open the box of the Internet Telephony PBX system and carefully unpack it. The box should contain the following items:

- IPX-2100 x 1
- Quick Installation Guide x 1
- User's Manual CD x 1
- Power Adapter x 1 (12V)
- RJ-45 x 1
- Bracket x 2

If any of above items are damaged or missing, please contact your dealer immediately.

2.2. Hardware Installation

The following are instructions for setting up PLANET IPX-2100. Refer to the illustration and follow the simple steps below to quickly install your Internet Telephony PBX system.

2.2.1 Safety Instructions

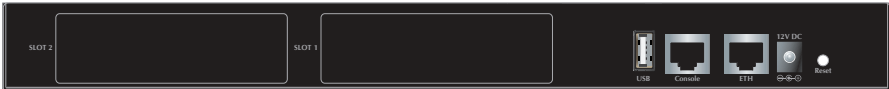
The following are the safety instructions for Internet Telephony PBX system before installing.

- The maximum operating temperature of the IPX-2100 is -10~45°C. Care must be taken to allow sufficient air circulation.
- The connections and equipment that supply power to the IPX-2100 should be capable of operating safely with the maximum power requirements of the IPX-2100. In the event of a power overload, the supply circuits and supply wiring should become hazardous.
- The power adapter must plug into the right supply voltage. Make sure that the supplied power voltage is correct and stable. If the input power voltage is over 10% lower than the standard, it may cause the IPX-2100 to malfunction.
- Generally, when installed after the final configuration, the product must comply with the applicable safety standards and regulatory requirements of the country in which it is installed. If necessary, consult for technical support.

2.2.2 Physical Introduction



Front Panel of the IPX-2100



Rear Panel of the IPX-2100



Note

Supporting 2 slots, user can buy expansion module like VIP-21FO (4 x FXO), VIP-21SL (2 x FXO + 2 x FXS) or VIP-21GS (4 x GSM) for extending port service.

2.2.3 LED & Button definitions

LED definitions

Front Panel LED	Status	Description
PWR	Steady Green Off	PBX Power ON PBX Power OFF
SYS	Blinking Green Off	System is working System is off
ETH	Blinking Green Off	PBX network connection is established Waiting for network connection
FXO	Steady Red Flashing Off	Ready / Standby Ringing Module not available
FXS	Steady Green Flashing Off	Ready / Standby Ringing Module not available
USB	Void	Future Feature

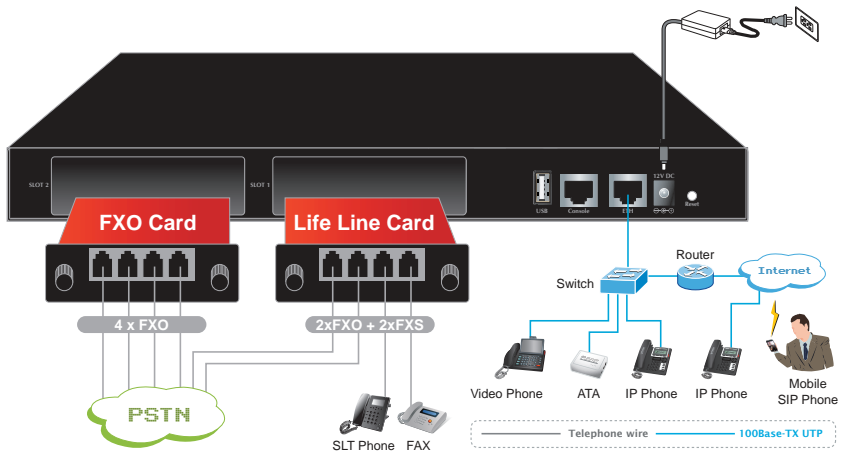
Button	Action	Description
Reset	Press less than 5 secs.	System reboot
	Press over 6 secs.	Reset to Factory Default

2.2.4 Placement

Make sure the device is placed in a safe environment to avoid equipment failure.

- DO NOT place anything on top of the device. Excessive weight could damage it.
- DO NOT obstruct ventilation slots on each side of the IPX-2100 or expose it to direct sunlight or other heat source. Be sure that there is adequate air flow around the IPX-2100.
- Place the IPX-2100 on a flat surface to avoid any damage.

2.2.5 Physical Connection



Physical Connection Topology of the IPX-2100

2.3. Basic System Configuration

2.3.1 Web Login

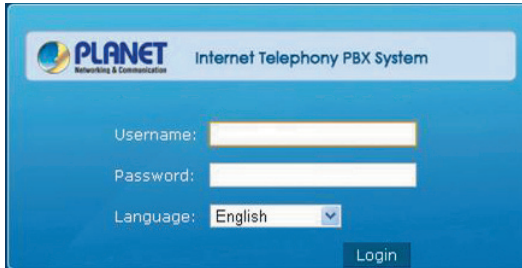
- Step 1.** Connect a computer to an ETH port on the IPX-2100. Your PC must set up to the same domain as 192.168.0.X as the IPX-2100.
- Step 2.** Start a web browser. To use the user interface, you need a PC with Internet Explorer (version 6 and higher), Firefox, or Safari (for Mac).
- Step 3.** Enter the default IP address of the IPX-2100: 192.168.0.1 into the URL address box.
- Step 4.** Enter the default user name **admin** and the default password **admin**, then click Login to enter Web-based user interface.

(Default IP)

Default ETH IP: **192.168.0.1**

Default User Name: **admin**

Default Password: **admin**



Login page of the IPX-2100

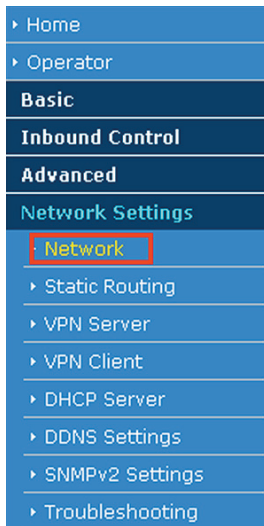


Note

For security reason, please change and memorize the new password after this first setup.

2.3.2 Configuring the Network Setting

Step 1. Go to Network Settings → Network



Network & Country button

The screenshot shows the 'Network' configuration page. At the top, there are three tabs: 'IPv4 Settings' (selected), 'IPv6 Settings', and 'VLAN Settings'. Below the tabs is the 'Ethernet Port Setup' section, which includes the following fields:

- IP Assign: Static (dropdown menu)
- Hostname: IPPBX
- IP Address: 192.168.1.198
- Subnet Mask: 255.255.255.0
- Gateway: 192.168.1.254
- Primary DNS: 192.168.1.254
- Alternate DNS: (empty field)

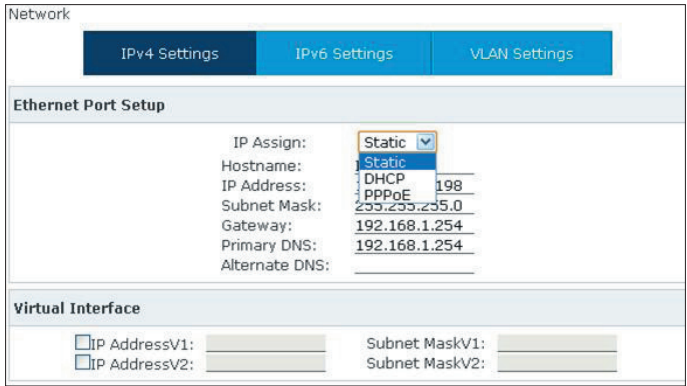
Below this is the 'Virtual Interface' section, which contains four input fields:

- IP AddressV1: (empty)
- IP AddressV2: (empty)
- Subnet MaskV1: (empty)
- Subnet MaskV2: (empty)

Network Setting page

Step 2. Edit your ETH port IP information.

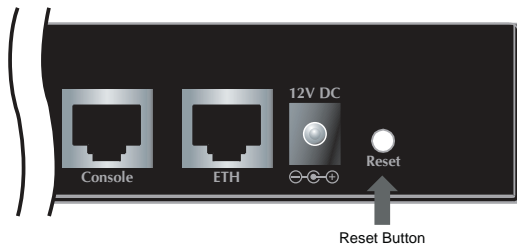
There are three types of Ethernet port connection. They are **Static IP**, **PPPoE** (Point-to-Point Protocol over Ethernet), **DHCP**. You can find detailed setting process in the user manual.



Selection of IP Connection Type

2.3.3 Changing IP Address or forgotten admin password

To reset the IP address to the default IP Address "192.168.0.1" (ETH) or reset the login password to default value. Press the reset button on the front panel for **more than 6 seconds**. After the device is rebooted, you can login the management WEB interface within the same subnet of 192.168.0.xx.



After pressing the "Reset" button, all the system data will be reset to default; if possible, back up the config file before resetting.

3. IPX-2500

3.1. Package Contents

Thank you for purchasing PLANET Internet Telephony PBX system, IPX-2500. This Quick Installation Guide will introduce how to finish the basic setting of connecting the web management interface and the Internet. Open the box of the Internet Telephony PBX system and carefully unpack it. The box should contain the following items:

- IPX-2500 x 1
- Quick Installation Guide x 1
- User's Manual CD x 1
- Power Cord x 1 (12V)
- RJ-45 x 1
- Bracket x 2

If any of above items are damaged or missing, please contact your dealer immediately.

3.2. Hardware Installation

The following are instructions for setting up PLANET IPX-2500. Refer to the illustration and follow the simple steps below to quickly install your Internet Telephony PBX system.

3.2.1 Safety Instructions

The following are the safety instructions for Internet Telephony PBX system before installing.

- The maximum operating temperature of the IPX-2500 is -10~45°C. Care must be taken to allow sufficient air circulation.
- The connections and equipment that supply power to the IPX-2500 should be capable of operating safely with the maximum power requirements of the IPX-2500. In the event of a power overload, the supply circuits and supply wiring should become hazardous.
- The power adapter must plug into the right supply voltage. Make sure that the supplied power voltage is correct and stable. If the input power voltage is over 10% lower than the standard, it may cause the IPX-2500 to malfunction.
- Generally, when installed after the final configuration, the product must comply with the applicable safety standards and regulatory requirements of the country in which it is installed. If necessary, consult for technical support.

3.2.2 Physical Introduction



Front Panel of the IPX-2500



Rear Panel of the IPX-2500



Note

Supporting 2 slots, user can buy expansion module like VIP-21FO (4 x FXO), VIP-21SL (2 x FXO + 2 x FXS) or VIP-21GS (4 x GSM) for extending port service.

3.2.3 LED & Button definitions

LED definitions

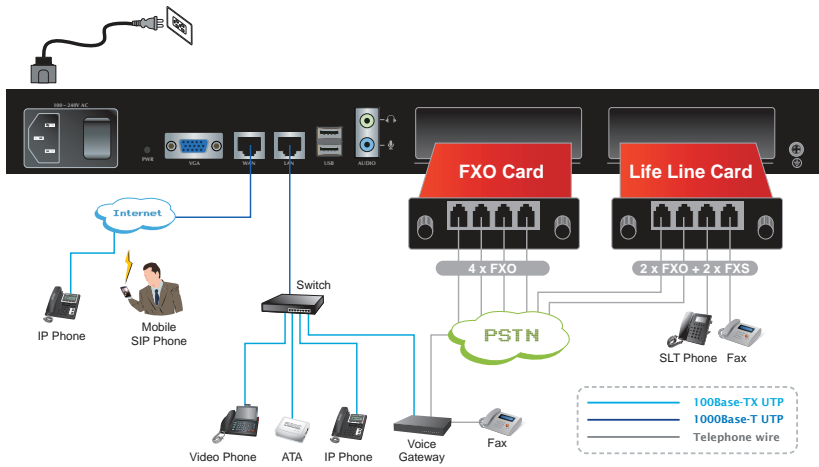
Front Panel LED	Status	Description
PWR	Steady Green Off	PBX Power ON PBX Power OFF
SYS	Blinking Green Off	System is working System is off
WAN	Blinking Green Off	PBX network connection is established Waiting for network connection
LAN	Blinking Green Off	Data transfer Waiting for network connection
FXO	Steady Red Flashing Off	Ready / Standby Ringing Module not available
GSM	Steady Red Flashing Off	Ready / Standby Ringing Module not available
FXS	Steady Green Flashing Off	Ready / Standby Ringing Module not available
USB	Void	Future Feature
Audio	Void	Future Feature

3.2.4 Placement

Make sure the device is placed in a safe environment to avoid equipment failure.

- DO NOT place anything on top of the device. Excessive weight could damage it.
- DO NOT obstruct ventilation slots on each side of the IPX-2500 or expose it to direct sunlight or other heat sources. Be sure that there is adequate air flow around the IPX-2500.
- Place the IPX-2500 on a flat surface to avoid any damage.

3.2.5 Physical Connection



Physical Connection Topology of the IPX-2500

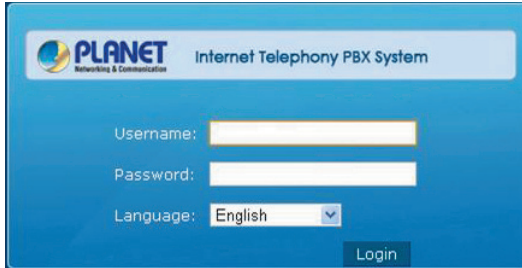
3.3 Basic System Configuration

3.3.1 Web Login

- Step 1.** Connect a computer to a LAN port on the IPX-2500. Your PC must set up to the same domain as 192.168.0.X as the IPX-2500.
- Step 2.** Start a web browser. To use the user interface, you need a PC with Internet Explorer (version 6 and higher), Firefox, or Safari (for Mac).
- Step 3.** Enter the default IP address of the IPX-2500: 192.168.0.1 into the URL address box.
- Step 4.** Enter the default user name **admin** and the default password **admin**, and then click Login to enter Web-based user interface.

(Default IP)

Default WAN IP: **172.16.0.1**
Default LAN IP: **192.168.0.1**
Default User Name: **admin**
Default Password: **admin**



Login page of the IPX-2500

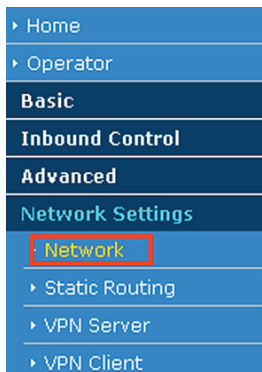


Note

For security reason, please change and memorize the new password after this first setup.

3.3.2 Configuring the Network Setting

Step 1. Go to Network Settings → Network



Network & Country button

Network

IPv4 Settings IPv6 Settings VLAN Settings

Ethernet Port Setup

IP Assign: Static

Hostname: IPPBX

IP Address: 192.168.1.198

Subnet Mask: 255.255.255.0

Gateway: 192.168.1.254

Primary DNS: 192.168.1.254

Alternate DNS: _____

Virtual Interface

IP AddressV1: _____ Subnet MaskV1: _____

IP AddressV2: _____ Subnet MaskV2: _____

Network setting page

Step 2. Edit your WAN port IP information.

There are three types of Ethernet port connection. They are **Static IP**, **PPPoE** (Point-to-Point Protocol over Ethernet), **DHCP**. You can find detailed setting process in the user manual.

Network

IPv4 Settings IPv6 Settings VLAN Settings

Ethernet Port Setup

IP Assign: Static

Hostname: _____

IP Address: _____

Subnet Mask: 255.255.255.0

Gateway: 192.168.1.254

Primary DNS: 192.168.1.254

Alternate DNS: _____

Virtual Interface

IP AddressV1: _____ Subnet MaskV1: _____

IP AddressV2: _____ Subnet MaskV2: _____

Selection of IP Connection Type

4. Further Configuration

Thank you for purchasing PLANET products. The above steps introduce the simple configuration of the IPX-330 / IPX-2100 / IPX-2500. For further configuration, please refer to the user's manual on the CD. If you have other questions, please contact the **local dealer** or **distributor** where you purchased this product.

You also can browse our online FAQ resource at the PLANET Web site first to check if it could solve your issue. If you need more support information, please contact PLANET support team.

PLANET online FAQ :

<http://www.planet.com.tw/en/support/faq.php>

Support team mail address:

support_voip@planet.com.tw

Copyright © PLANET Technology Corp. 2014.

Contents are subject to revision without prior notice.

PLANET is a registered trademark of PLANET Technology Corp. All other trademarks belong to their respective owners.