

# IP Camera

ICA-4200

## Ultra-Mini Full HD Fixed Dome IP Camera



SD Card



PoE



2

Mega-Pixel

H.264

Easy

DDNS

WDR

## VERIFY THE CONTENTS INSIDE THE BOX

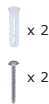
The package should contain the following items plus Ultra-mini Full HD Fixed Dome IP Camera. If any item is missing or damaged, please contact the seller immediately.



Quick Installation Guide

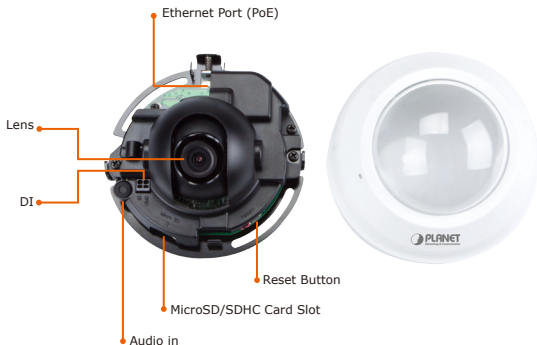



CD-ROM



Wall-mount Kit

## Step 1 : Hardware Overview



Interface	Description
<b>Audio in</b>	User can enable the function of the built-in microphone via audio setting in the Web UI.
<b>Ethernet port (PoE)</b>	The LAN socket is an RJ45 connector for connection to 10BASE-T Ethernet or 100BASE-TX Fast Ethernet cabling. Not only can this Ethernet port detect or negotiate the transmission speed of the network automatically but also input power for camera operation. Please use Category 5 cable to connect the Network Camera to an 802.3af PoE network switch.
<b>Lens</b>	1/2.5" Progressive Scan CMOS
<b>DI</b>	Digital input
<b>Micro-SD/SDHC card slot</b>	User can insert a micro SD card (up to 32G) into this slot for event recording.
<b>Reset button</b>	<p>This button is used to restore all the factory default settings. Sometimes restarting the camera will make the system return to a normal state. If the system still got problems after restarting, user can restore the factory default settings and configure it again. To restore the device, please follow the steps below:</p> <ol style="list-style-type: none"> <li>1. Press 'Reset' button for 5 seconds to reset the device to the factory default.</li> <li>2. Login the camera using the default IP (<a href="http://192.168.0.20">http://192.168.0.20</a>), with "admin" for both username and password.</li> </ol>
	<div data-bbox="342 1107 498 1317">  <p>Note</p> </div> <div data-bbox="498 1107 961 1317"> <p>Restoring the factory default setting will lose all the previous settings including IP address forever. User needs to back up configuration file in advance before restoring.</p> </div>

## Step 2 : Case Disassembly



Press the button to release the case.

Lift up the case to remove.

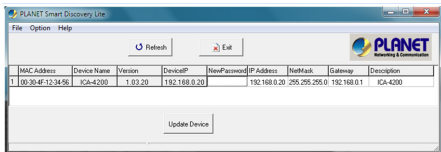
## Step 3 : Connecting Network and PoE



**Note:** The camera supports IEEE 802.3af and is only powered from PoE.

## Step 4 : Running Installer Utility to Locate the IP Camera

- Insert the CD-ROM supplied in the product package and the CD will automatically run the installation. If not, please click the Smart Discovery Lite utility hyperlink to install.
- After the camera utility is launched, all cameras found in your local area network will be displayed.

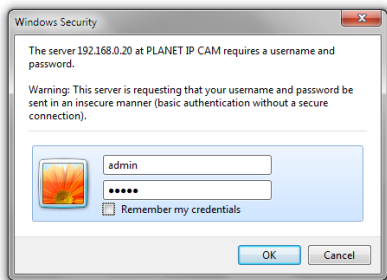


## Step 5 : Opening the Dialog Box for Further Configuration

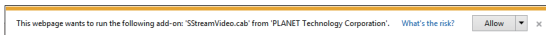
- Select the IP Camera you want to configure and input its IP address into the browser search bar.



- The IP Camera will be connected via Web browser automatically; the IP Camera will prompt for logon user name and password. Please enter **admin** as the default user name and password.



- When the device is logged on for the first time, the browser will prompt a message; please click **"Allow"** to install controls.

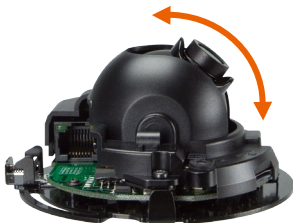


Note

If IE9 or higher version browser is used, it is suggested that the PLANET camera Web link should be added as a trusted site.

## Step 6: Adjusting Lens Angle and Re-mounting the Case

- Manually adjust lens angle that you want the area to be monitored.
- After adjusting the angle, re-mount the case.



## Appendix A : Default Setting

<b>Default DHCP Client</b>	On
<b>Default IP Address</b>	192.168.0.20 – if DHCP does not exist in the network
<b>Default Login User Name</b>	admin
<b>Default Login Password</b>	admin
<b>Search Tools</b>	Smart Discovery Lite

## Further Configuration

For detailed configuration, please check user's manual on the bundled CD. If you have any other question, please contact the dealer where you purchased this product or you can contact PLANET directly at the following email address: [support@planet.com.tw](mailto:support@planet.com.tw)