

Quick Installation Guide WIPG-300H

802.11n Wireless Interactive
Presentation Gateway



1. Package Contents

Thank you for choosing PLANET WIPG-300H. Before installing the device, please verify the contents inside the package box.



Note If there is any item missing or damaged, please contact the seller immediately.

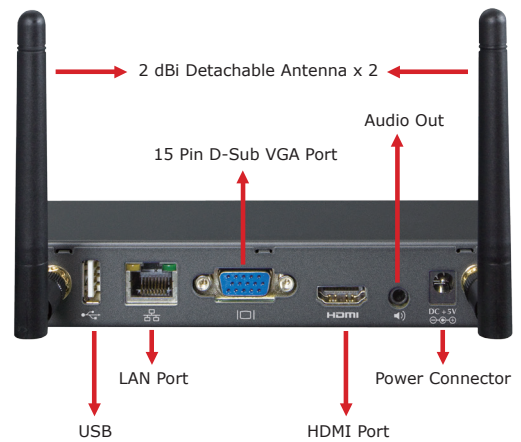
- 1 -

2. Physical Introduction

Front Panel Description



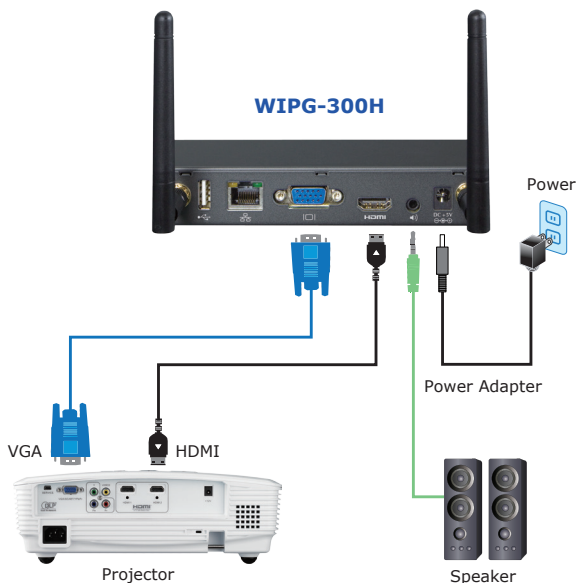
Rear Panel Description



- 2 -

3. Hardware Installation

Step 1: Please turn on your projector first and connect HDMI or D-sub cable of the projector to the WIPG-300H. Now you can power on the WIPG-300H.



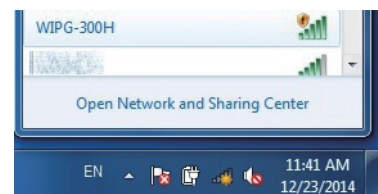
- 3 -

Step 2: When the projector shows the default screen as shown below, it indicates the WIPG-300H is ready now.



4. Software Installation – Windows

Step 1: The site surveys the wireless signal of the WIPG-300H, and connect your PC with it wirelessly.



* The connection information (SSID) can be found on the projector screen.

- 4 -

Default SSID: **WIPG-300H** Default IP Address: **192.168.1.1**
Default Username: **admin** Default Password: **admin**

Step 2: Open the web browser and it will redirect to the WIPG-300H home page automatically, or you can enter the default IP address **192.168.1.1** to access it.




Step 3: Download the client utility (**WIPG**) of XP / Vista / Windows 7 / 8 and execute it. After installing the program, you'll see WIPG shortcut on your PC desktop.

You can download Utility for Windows from here.

[Download](#) (XP / Vista / Windows 7 / 8)

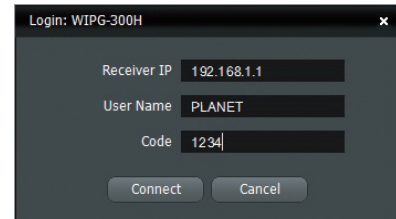
Note:
For Internet Explorer 8 and above, please disable the "SmartScreen Filter" first to download and install this software.

Step 4: Click WIPG icon  on the desktop to execute the program. The WIPG will start to search the available access points automatically if you have not connected your PC to the WIPG-300H manually.




Note Please make sure the firewall in Windows will allow the WIPG software to pass through.

Step 5: When the default SSID "WIPG-300H" is displayed in the list, please click it to connect and then enter the Login Code shown on the projector screen.



- 5 -

- 6 -

Step 6: Click the  button to start projection, or choose one of the numbers (1-4) to project to the split screen.



5. Software Installation – Mac OS X

Step 1: Enable your Wi-Fi and connect to the WIPG-300H.



Step 2: Open the web browser and enter the default IP address **192.168.1.1** to access the WIPG-300H home page.
Download the client utility (**WIPG**) of Mac OS X and execute it.

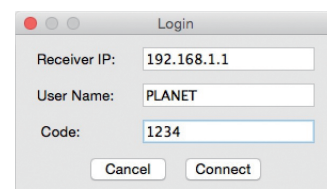


You can download Utility for MAC from here.

[Download](#) (MacBook 10.7 ~ 10.10)



Step 3: Launch WIPG software and enter the login code.



Further Information :

The above steps introduce simple installations and configurations of the WIPG-300H. For further configurations of the utility (WIPG), Virtual Extended Screen, Wi-Fi AP-Client, etc, please refer to the user's manual which you can download from the website.

<http://www.planet.com.tw/en/support/download.php?type1=4&model=48653&type=3>

If you have further questions, please contact the local dealer or distributor where you purchased this product.



2011-E60070-000

- 7 -

- 8 -